

The 2159

Elevation C



3-4
BED



2.5
BATH



2-Car
GARAGE



2
FLOORS

Elevation D



Elevation TBC



3-4
BED



2.5
BATH



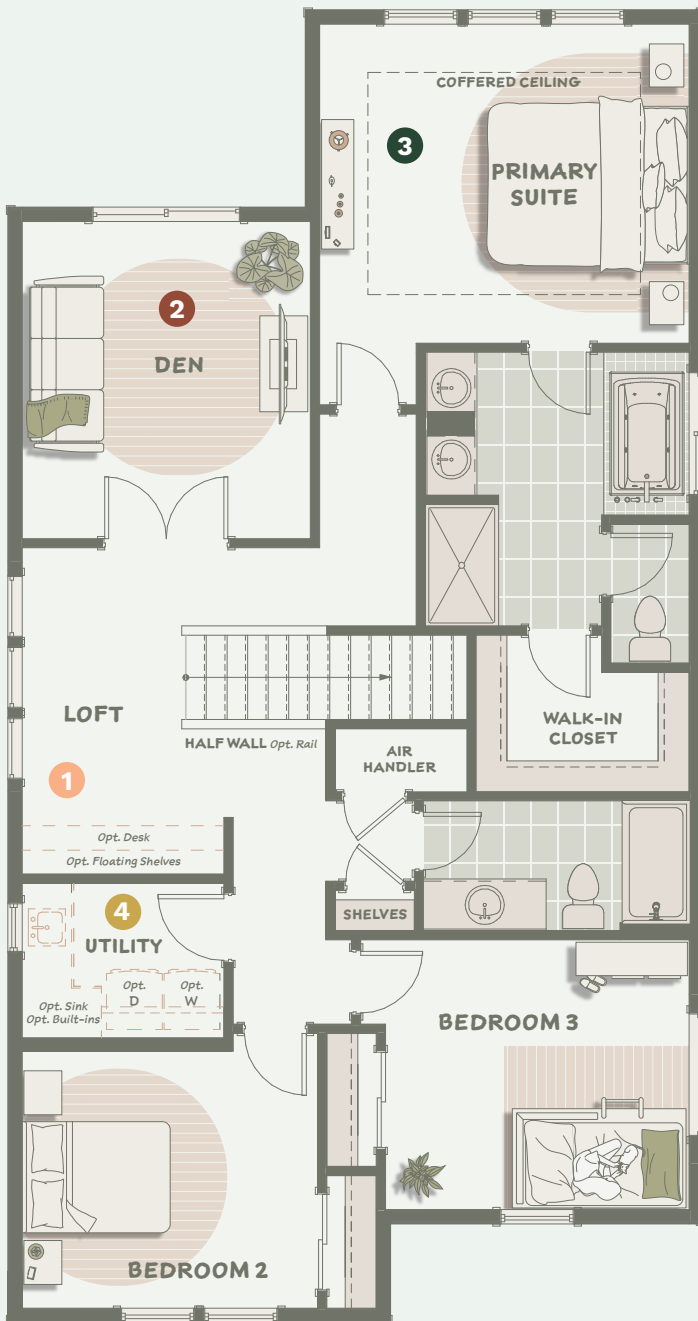
2-Car
GARAGE



2
FLOORS



Upper Level



1 LOFTY SPACES

Plenty of options and variations throughout the home allow you to enjoy increased functionality and personalized design for your unique lifestyle. Ask your Sales Consultant for more details.

2 WELL-TAILORED

The positive impacts of natural light are many. Extra windows in spaces like the stairwell can make a difference in how your home feels day-to-day. In areas like the primary bath, an added window is also a source for ventilation.

3 PEACE AND PURPOSE

Coffered ceilings are popular for their visual depth, but did you know they can also help with acoustics by absorbing sound? The effect is a calmer space which aids in relaxation.

4 SPACIOUS EASE

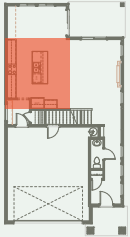
Giving hard-to-store items a home prevents small annoyances from building into bigger stressors. A linen closet helps with daily needs, giving you more control and efficiency.

WHAT IS LIFEMADE?

Lifemade™ draws on real homeowner data and insights to guide every design and construction decision, ensuring that each home is thoughtfully crafted to be the happiest place in the world.

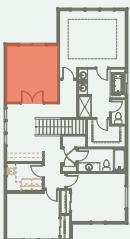
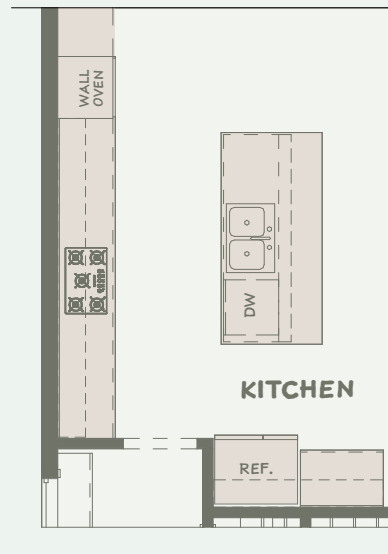
lifemade™
homes built for happiness™

Some homes feature alternate configurations that provide variety across each plan. Depending on construction progress, your home may already include some of these features. We'll help you explore what's available and guide you to a home that suits your needs and timeline.



A CHEF'S KITCHEN

Gourmet Kitchen



ROOM FOR MORE

Bedroom 4 in Lieu of Den

