

The 1877 Floor Plan.

HOLTHOMES
Built for the Pacific Northwest



Elevation C



Elevation D



SQUARE FEET:

1,877



STORIES:

2



BEDROOMS:

3



BATHS:

2.5



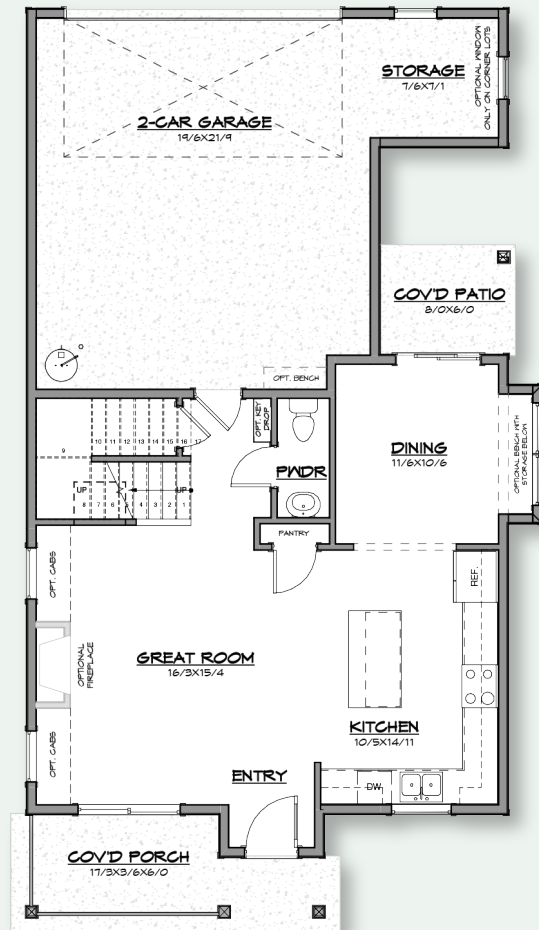
GARAGE CAPACITY:

2

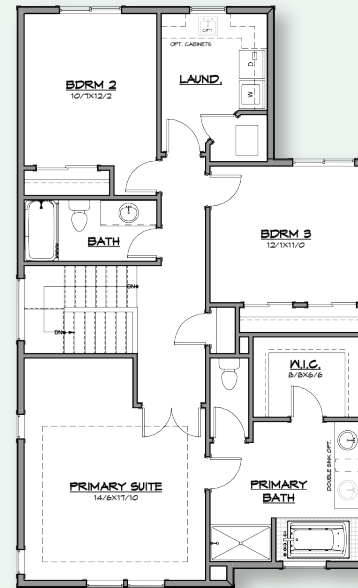
FIND HOME: holthomes.com/floorplans

HOLTHOMES

Built for the Pacific Northwest



MAIN LEVEL



UPPER LEVEL



SQUARE
FEET:

1,877



STORIES:

2



BEDROOMS:

3



BATHS:

2.5



GARAGE
CAPACITY:

2

Floor plans are computer generated and actual construction may vary. Pricing, dimensions, exteriors and specifications are subject to change.
Plans and finishes vary from one community to another. Ask your sales agent for more information.

CCB: 133921
WAWI882ML

To learn more about this floor plan please visit our website holthomes.com/floorplans.

