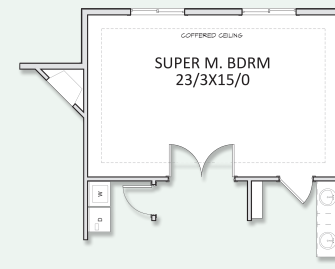
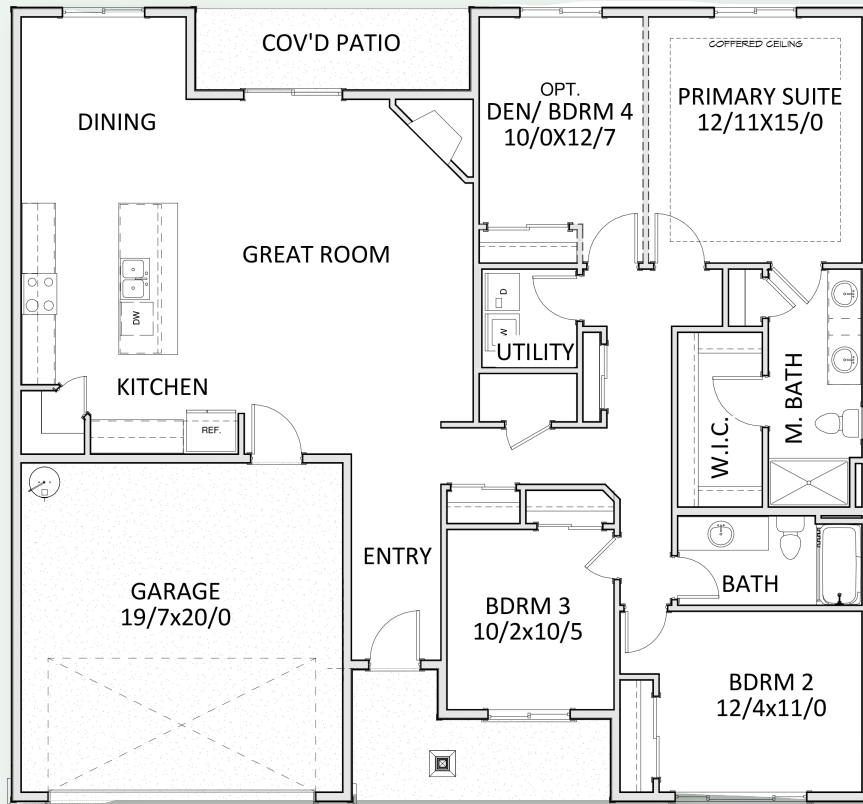


HOLTHOMES

Built for the Pacific Northwest



OPTIONAL PRIMARY SUITE



SQUARE
FEET:

1,902



STORIES: **1**



BEDROOMS: **3-4**



BATHS: **2**



GARAGE
CAPACITY: **2**

Floor plans are computer generated and actual construction may vary. Pricing, dimensions, exteriors and specifications are subject to change. Plans and finishes vary from one community to another. Ask your sales agent for more information.

CCB: 133921
WAWI882ML

To learn more about this floor plan please visit our website holthomes.com/floorplans.



The 1902 Floor Plan.

HOLTHOMES
Built for the Pacific Northwest



Elevation A



Elevation B



Elevation D



SQUARE FEET:

1,902



STORIES:

1



BEDROOMS:

3-4



BATHS:

2



GARAGE CAPACITY:

2

FIND HOME: holthomes.com/floorplans