

# The 3370 Floor Plan.

**HOLTHOMES**  
Built for the Pacific Northwest



**Elevation A**



**Elevation B**



SQUARE FEET:

**3,370**



STORIES:

**2**



BEDROOMS:

**5-6**



BATHS:

**3**



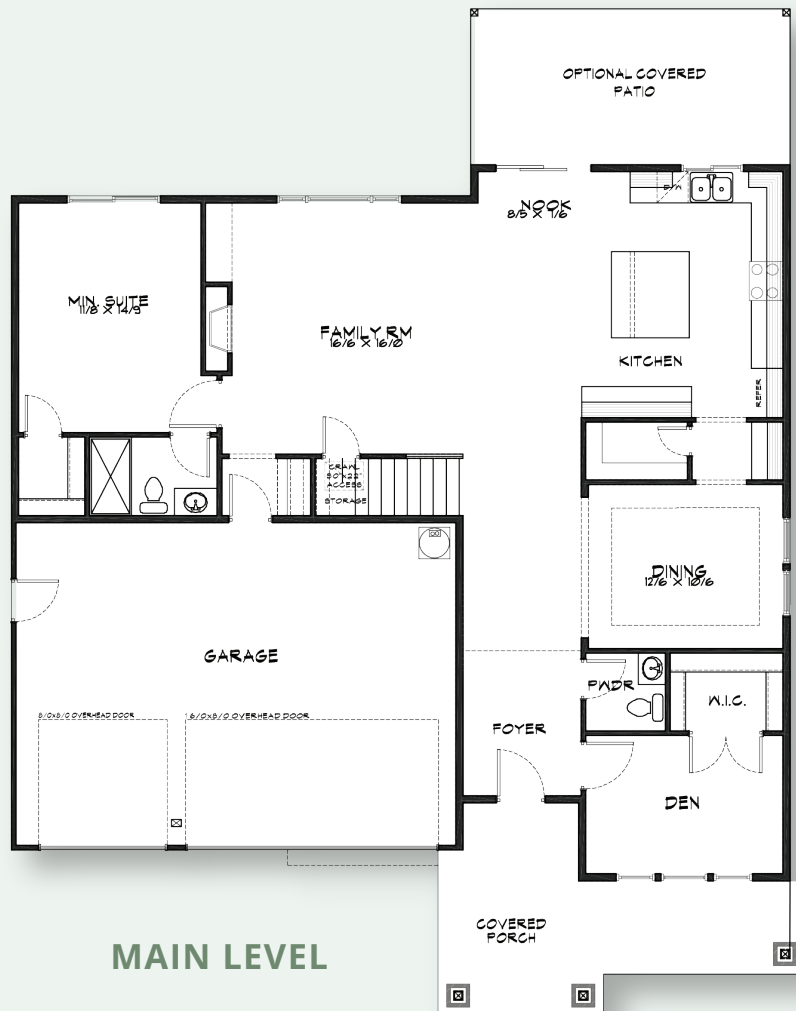
GARAGE CAPACITY:

**3**

FIND HOME: [holthomes.com/floorplans](https://holthomes.com/floorplans)

# HOLTHOMES

Built for the Pacific Northwest



SQUARE FEET: **3,370**



STORIES: **2**



BEDROOMS: **5-6**



BATHS: **3**



GARAGE CAPACITY: **3**

Floor plans are computer generated and actual construction may vary. Pricing, dimensions, exteriors and specifications are subject to change. Plans and finishes vary from one community to another. Ask your sales agent for more information.

CCB: 133921  
WAWI882ML

To learn more about this floor plan please visit our website [holthomes.com/floorplans](https://holthomes.com/floorplans).

